

iVMS-4500(S60 3rd) Mobile Client Software User Manual Version 1.0

Thank you for purchasing our product. This manual applies to iVMS-4500 (S60 3rd) mobile client software, please read it carefully for the better use of this software.

The contents in this manual are subject to change without notice.

Contents

Chapter 1 Introduction	3
1.1 Overview	3
1.2 System Requirements	3
1.3 Performance Description	3
Chapter 2 Install & Uninstall	4
2.1 Install the Software	4
2.2 Uninstall the Software.....	6
Chapter 3 Running Software	7
3.1 Login Software	7
3.2 Main Menu.....	8
Chapter 4 Devices Management.....	9
4.1 Add Device	9
4.2 Modify Device	10
Chapter 5 Camera Configuration	11
Chapter 6 Live Preview	13
6.1 Live Preview	13
6.2 PTZ Control.....	14
Chapter 7 Favorites Management	16
Chapter 8 Local Configuration	18
Chapters 9 Others	19
Appendix Troubleshooting.....	20

Chapter 1 Introduction

1.1 Overview

iVMS-4500 (S60 3rd) mobile client software, which is base on Symbian S60 3rd edition, can be used to remotely monitor the live video from embedded DVR, IP camera, IP speed dome and DVS via wireless network, and PTZ control can be achieved as well.

With this software installed in your mobile device, you are able to log on to the front-end device via WIFI, 2G or 3G, besides, if there is no public IP available, it's also accessible by using a dynamic name, or by forwarding internal ports to the internet for router

1.2 System Requirements

For the Symbian S60 3rd FP2 system, you may install the application directly on your phone, for Symbian S60 3rd and S60 3rd FP1 system, you may need to install PIPS component when install the application.

1.3 Performance Description

Mobile Client	Stream Type	Sub stream
	Frame Type	BBP or single P
	Frame Rate	2~8FPS (depends on the performance of mobile device)
	Resolution	QCIF, CIF
	Stream Type	Video
	Bit Rate	32~256Kbps (depends on the net environment)

Chapter 2 Install & Uninstall

2.1 Install the Software

You may either copy the installation file to your phone to navigate installation or start installation on your PC directly by connecting PC to your mobile device.

The following shows the installation procedures for Symbian S60 3rd FP2 system:

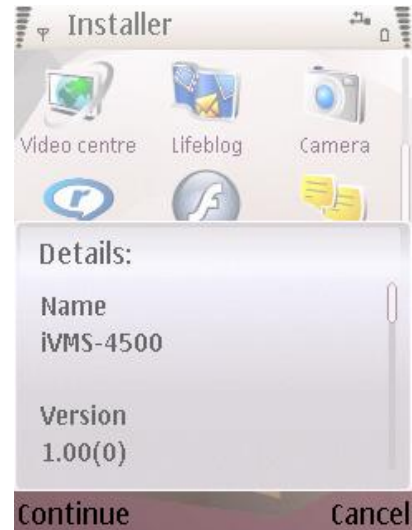
At the mobile device, when prompted to install the software, select 'YES'.



When prompted with a security warning, select 'Continue'.



An information screen appears, select 'Continue'.



The installation directory select will prompt, the user can select install the application to 'Memory card' or 'Phone Memory'.




Note: please ensure the memory card has not been encrypted if select memory card to install, otherwise, the mobile client could not be activated after reboot.

When an information screen appears, select 'Continue', then the progress indicator will appear in the process of installation, please wait for the installation to complete.




2.2 Uninstall the Software

Menu > Applications > Installations, select  icon, click 'Option' and then select 'Remove' to start uninstall.

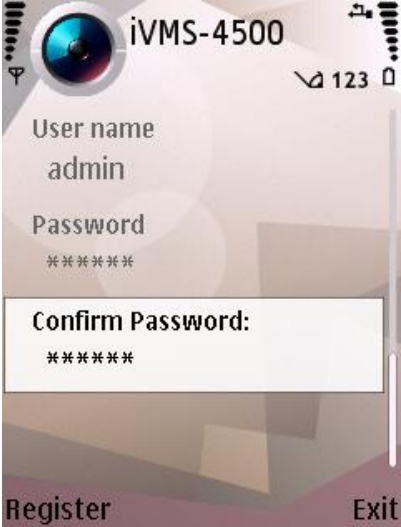
A warning screen appears, select 'Yes' to continue until the process to be completed.

Chapter 3 Running Software

After install the software successfully, navigate to Menu > Applications > Installations, you can click  icon to start the program.

3.1 Login Software

User needs to register an administrator if this application is used for the first time, enter the user name and password in the register interface, and then click 'Register' to complete user registration.



The image shows the 'Register' screen of the iVMS-4500 mobile application. At the top, there is a status bar with signal strength, the text 'iVMS-4500', and battery level '123'. Below the status bar is a header with a camera icon and the text 'iVMS-4500'. The main form contains two input fields: 'User name' with the value 'admin' and 'Password' with masked characters '*****'. Below these is a 'Confirm Password:' field with masked characters '*****'. At the bottom, there are two buttons: 'Register' on the left and 'Exit' on the right.

If it's not the first time to run this application, the user name that used last time will be the default user name, before login, navigate to 'Remember' item you can select 'Yes' to save current login password.



The image shows the 'Login' screen of the iVMS-4500 mobile application. At the top, there is a status bar with signal strength, the text 'iVMS-4500', and battery level '123'. Below the status bar is a header with a camera icon and the text 'iVMS-4500'. The main form contains two input fields: 'User name' with the value 'admin' and 'Password' with masked characters '*****'. Below these is a 'Remember:' field with the value 'Yes'. At the bottom, there are two buttons: 'Login' on the left and 'Exit' on the right.

3.2 Main Menu

Click 'Login' to login the software, main menu interface appears.



Main menu description

Main Menu	Descriptions
Live Preview	Live preview and PTZ control
Devices	Add new device, delete device, device's information
Favorites	Define specific channels to your favorites
ChannelConfig	Configure camera's stream type, resolution, frame rate and bit rate
Local Config	Access point and speed of PTZ control
Account Setting	Password modification
Help	Help document
About	Software's version information

Chapter 4 Devices Management

The device list is empty in default. Firstly you need to add a device to this software.

4.1 Add Device

Click 'Devices' icon in the menu to enter devices management interface, navigate to 'Option' -> 'Add', you will be taken to a new device configuration interface.



You can select either 'IP' or 'Domain' register mode to login the device, domain name mode is for the case that there is no fixed IP address available.



Parameters description

Parameters	Descriptions
Device name	Define a name for the device
Register mode	IP or DDNS
Address	IP address or dynamic name address
Port	Traffic port of device
User name	Device's user name
Password	Device's password

The newly added device is shown in the device list after click 'Save' to complete settings

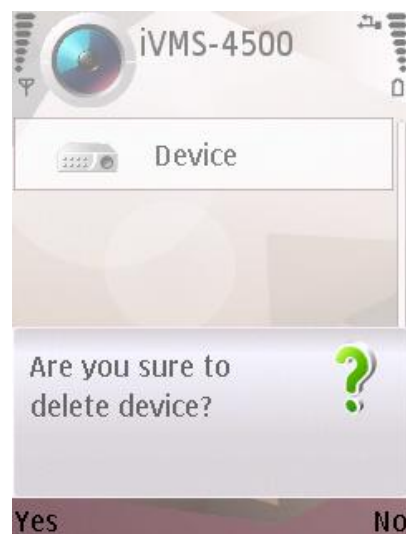


4.2 Modify Device

Select a device in the list, then click 'Option', in the pop up list, you may select 'Modify' to modify the login parameters.




Select 'Delete' option or 'C' button to remove this device from the list.



Chapter 5 Camera Configuration

After add the device successfully, you can configure the preview parameters for each camera according to your net environment.

Click  icon in the menu to enter channel configuration interface, the added devices are listed.

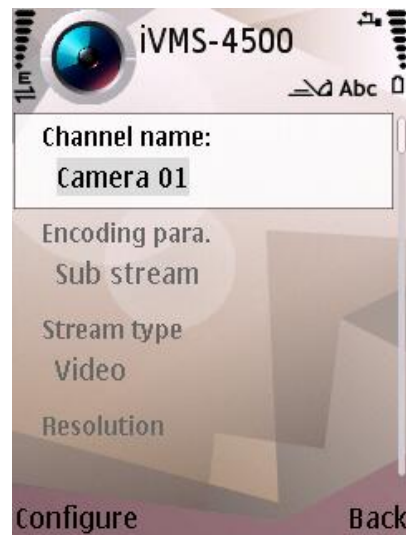


Select a device, you will login this device and cameras included in this device will appear, you can select a camera that desired to be configured.



Then click 'OK' to enter parameters configuration interface, you can configure stream type, resolution, image quality, bit rate, frame rate, etc.

Select the parameter that desired to be modified, then click 'OK' to complete the settings.




Camera parameters description

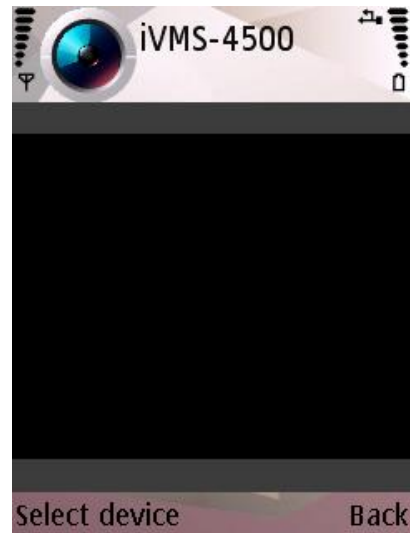
Parameters	Description
Chan. name	Define a name for the camera
Encoding para.	You need to select sub stream for live preview, however, you can also configure the parameters for main stream
Resolution	CIF or QCIF
Image quality	six levels of image quality included
Bitrate type	Variable or constant bit rate
Max. bitrate	The maximum bit rate of each camera, you need to configure it according to the net environment.
Frame rate	Frame rate of the camera

Chapter 6 Live Preview

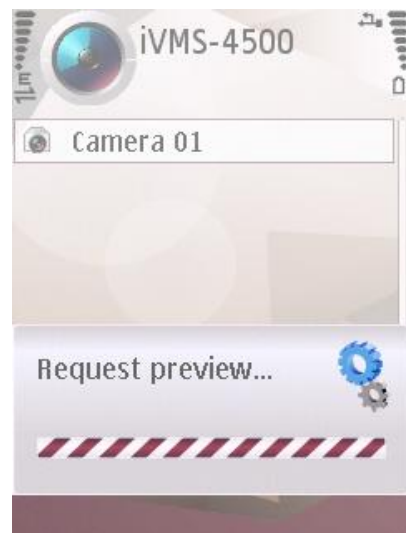
After the proper parameters are configured, you can preview the cameras, control the PTZ as well.

6.1 Live Preview

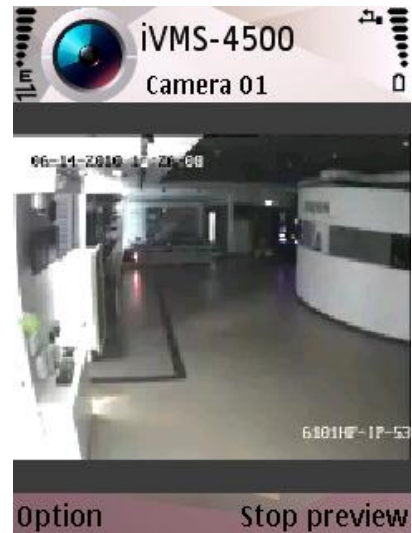
Enter live preview interface by clicking  in the menu, there is no camera in default.



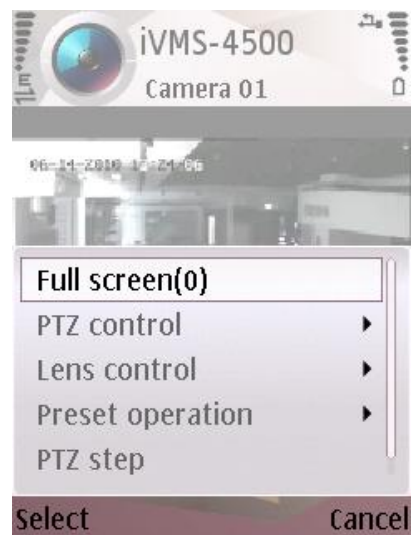
Select 'Select device', the added device and Favorites are displayed in the list, select a device and click the desired camera you will be taken to live preview interface.



In the live preview interface, you can select 'Stop preview' to return cameras selection page.

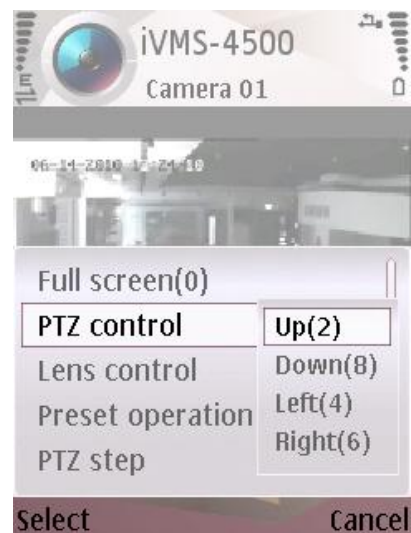


In the live preview interface, navigate to 'Option' -> 'Full screen' you will enter full screen display mode.

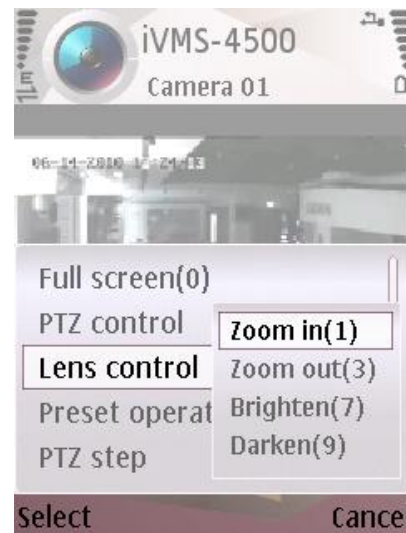


6.2 PTZ Control

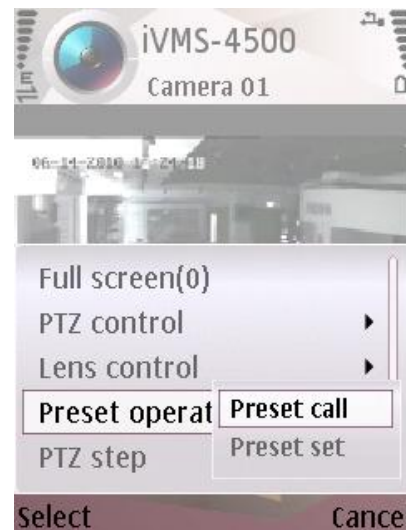
In the live preview interface, navigate to 'Option' -> 'PTZ Control', you can select 'Up', 'Down', 'Left' or 'Right' to control the pan and tilt position. You can also achieve it by pressing the corresponding digits on your keyboard directly.



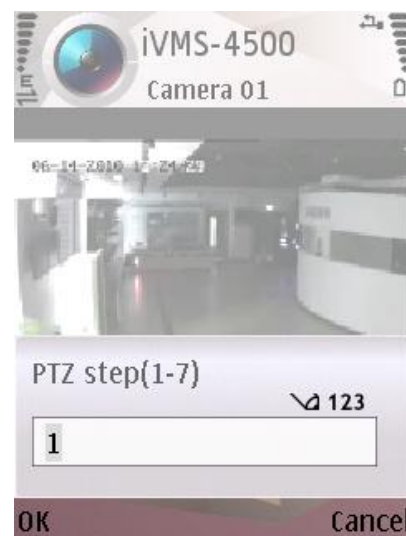
Select 'Lens control' option, then you are allowed to select 'Zoom in', 'Zoom out', 'Brighten' or 'Darken' to control lens parameters, the corresponding digits '1', '3', '7' and '9' are the corresponding shortcut keys.



Select 'Preset operation' option, you can set or call the presets




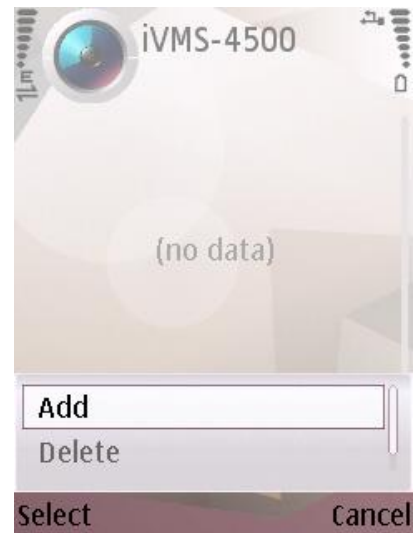
Select 'PTZ speed' option, you can configure the speed for the PTZ control, there are seven steps in all(from 1 to 7)



Chapter 7 Favorites Management

Group management is a function that includes some favorite cameras and makes the preview easier when only concern some specific cameras.

In the main menu interface, click  to enter favorites management interface, there is no camera under 'Favorites', so you need to add cameras at this point. navigate to 'Option'-'>'Add'.



In the cameras selection interface, click a device which includes the desired camera, after the camera list displayed, you can select any of the cameras and click 'Add' to include it.



After finish the cameras selection, click 'Back' to return to favorites management interface, the cameras you added are included in the list now.



Now, navigate to the live preview interface, you can select the cameras directly from 'Favorites' to display it


To remove camera from your favorites, you can enter 'Favorites' interface, select the desired camera and navigate to 'Option' -> 'Delete' or press 'C' button directly to remove it.

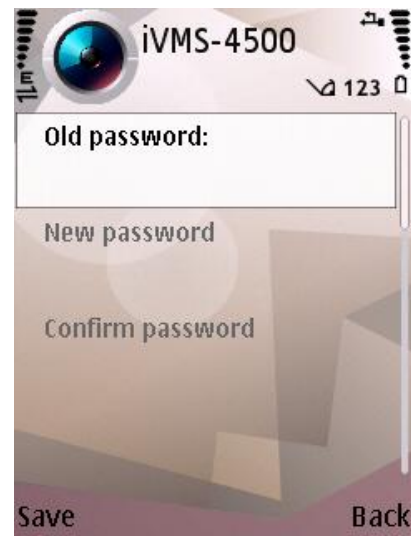
Chapter 8 Local Configuration



You can configure the internet access point and the step of speed when control the PTZ camera. Select an access point according to your network environment.

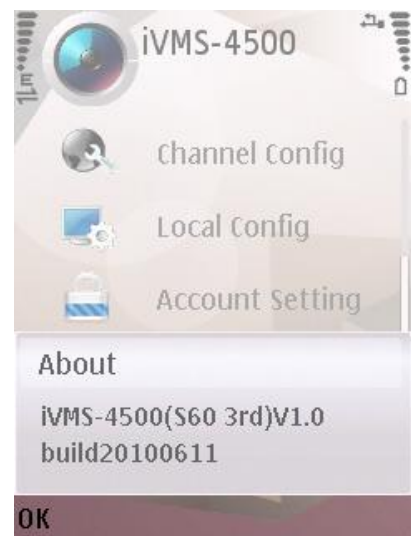


Chapters 9 Others

Click  in the main menu you can enter password modify interface, it's allowed to modify your current password. Enter old password, new password and then confirm new password to complete the modification.



Click  in the main menu, you will get the information of the software such as version, build date. If needs any help during the operation, you can click  to call out and open the help document.



Appendix Troubleshooting

1. What kinds of devices are compatible with iVMS-4500 mobile client software?

A: The encoder which adopt H264 codec are compatible with this software, such as embedded DVR, DVS, IP camera and IP speed dome, besides it also requires this software to be applied with device which support dual stream.

2. Why the mobile client software prompt 'login failed' when access to the device via WIFI?

A: Please check whether the WIFI parameters are configured properly in your mobile device.

3. After start previewing the video, why does the responding of the mobile device becomes very slow and the video is easy to get stuck?

A: This problem may due that the lower performance of your mobile device, please try to preview less cameras at the same time, or decrease the frame rate and resolution.